

# Better Health Systems and Policies revealed from research and innovation

**EHMA COVID 19 Webinar**  
**1 September 2020**

*Sabrina Montante*  
*TO-REACH Coordinating Team*



# Why was the problem urgent even before the COVID 19 Pandemic?

Health systems differ widely among EU member States but share common principles. In particular they face common challenges:

- ✓ a changing disease burden coupled with **population ageing**
- ✓ accelerated advances in **bio-medical technology**
- ✓ growing **consumer expectations** and respecting people's needs, wants and preferences
- ✓ the need to ensure that any such technology is used effectively and appropriately and at a cost that is affordable,
- ✓ shortages, frustrated and the uneven distribution of **health and care professionals**
- ✓ persistent and rising **health inequalities and inequities**
- ✓ **financial pressures on economies**

Source: Nolte et al. (2018)

# What COVID 19 has revealed?

- COVID-19 has shown the vulnerability of our societies, hitting severely the economy at large and more particularly the health and care systems
- There is a clear need to increase the capacity of health and care systems in terms of better use of space (facilities), staff and supplies and there is much room for improvement in terms of prevention, vigilance, reactivity, coordination, information exchange, logistics, overall organization and importantly cooperation and solidarity. (OECD Report 2020)
- A positive lesson could be inferred from the COVID-19 outbreak: the need for cooperation and coordinated actions to tackle global challenges
- Decisions have to be based on evidence. Need for advancing high quality cross-country health systems research to inform policy development and decision making





TO-REACH is a Coordination and Support Action funded by Horizon 2020 Societal Challenge 1

It provides useful conceptual frameworks for research and innovation supporting healthcare services and systems so that they become more resilient, effective, equitable, accessible, sustainable and comprehensive in Europe and elsewhere.

TO REACH SRA is focusing conceptually and methodologically on learning from services and policy innovations and the conditions needed to transfer and implement these from one setting to another, both within and between countries

# The consortium

Europe



28 partners  
20 countries

Israel



USA and Canada

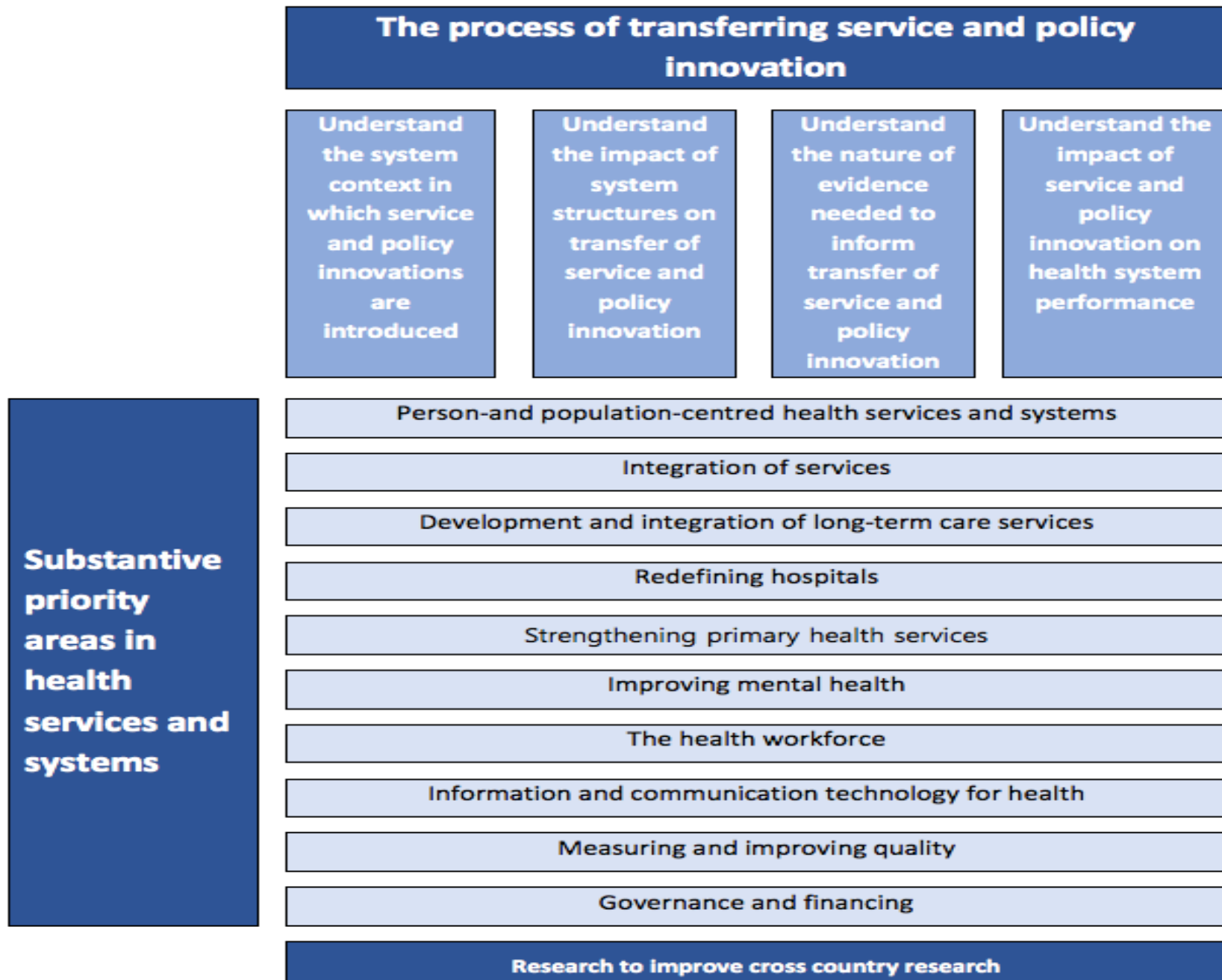


# TO REACH Strategic Research Agenda

- TO REACH SRA proposes two interlinked types of priority research needs:
  1. One reflects the main substantive service and policy areas in which more service and policy innovation is needed.
  2. The second identifies the main research input needed to inform the potential transfer and joint development of service and policy innovation.

Methods: SRA informed by systematic analysis of priority challenges for service and policy innovations to strengthen health systems as identified from policy documents as well as through consultation roundtables within Member States and a Europe-wide stakeholder survey, along with a review of the relevant academic literature.

**Figure 1 Overview of main priority areas of the TO-REACH Strategic Research Agenda**





# Questions for the audience

- **What is the EU-wide added value of a research cooperation in this field?**
- **What do we need to know to learn / understand better from other countries?**
- **Where are the knowledge gaps?**
- **What to do to move forward (involve whom? Avoid or overcome which obstacles?)**

# Contacts

Learn more



[www.to-reach.eu](http://www.to-reach.eu)

Contact us



[to.reach@iss.it](mailto:to.reach@iss.it)

Follow us



[@toreachEU](https://twitter.com/toreachEU)

