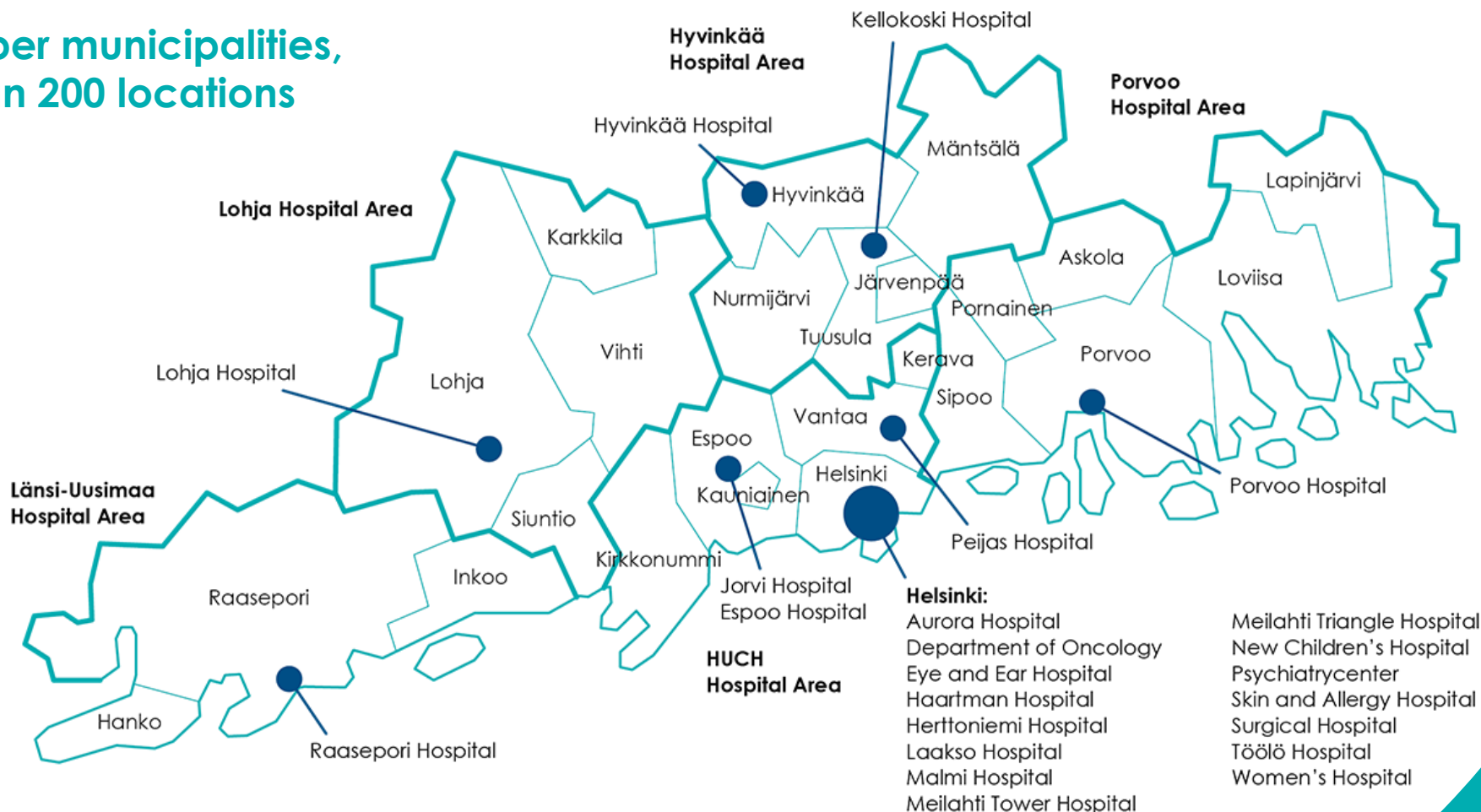


# COVID-19 IN HELSINKI UNIVERSITY HOSPITAL

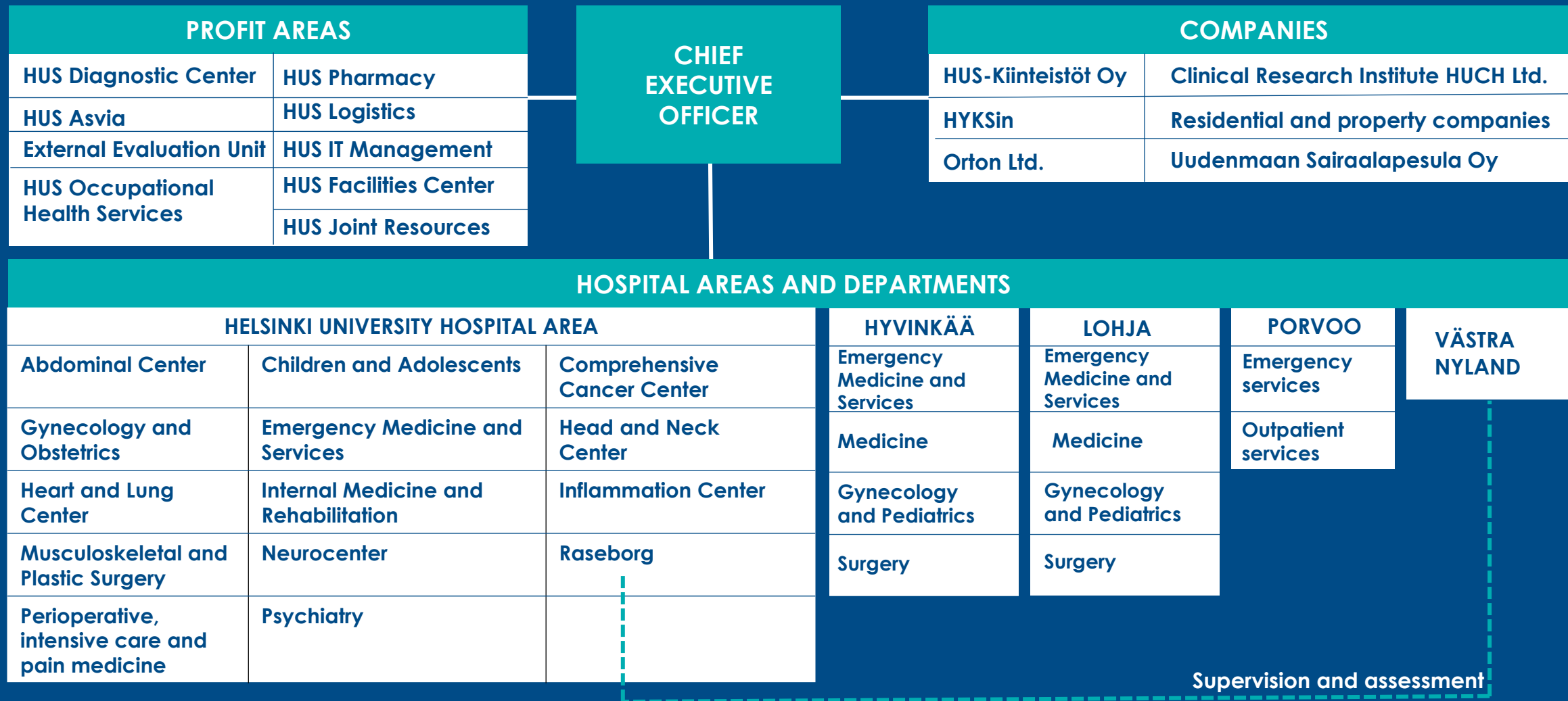
Markku Mäkijärvi, CMO, FESC

# WE OPERATE IN 23 HOSPITALS

24 member municipalities,  
more than 200 locations



# HUS organization 2019



## HUS in figures 2019

**1 in 3**  
**residents**  
of the 24 member  
municipalities  
used HUS services.



Costs for  
member  
municipalities

**€1050**/resident



**23** hospitals  
Over 200  
places of care

**680,000**  
**PATIENTS**  
**TREATED**



Investments  
**€209 million**

Construction  
investments of  
€137 million

**2,800**  
hospital beds



**27,000**  
**EMPLOYEES**

HUS is the 2nd largest employer  
in Finland.



**70%**  
of employees would  
recommend HUS  
as a place of work

Healthcare in 2019

# 2,900,000 PATIENT VISITS



**92,000**  
surgeries



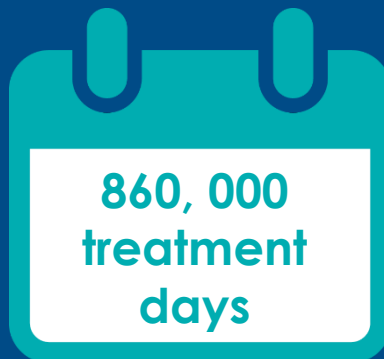
**453**  
organ transplants

**16,000**  
childbirths

**24.5 million**  
laboratory tests



**680,000**  
PATIENTS  
TREATED



**330,000**  
elective referrals

**82,000**  
emergency referrals



**1.8 million**  
imaging examinations



**2,800**  
hospital beds

## Personnel 2019

**340**  
different  
job  
titles

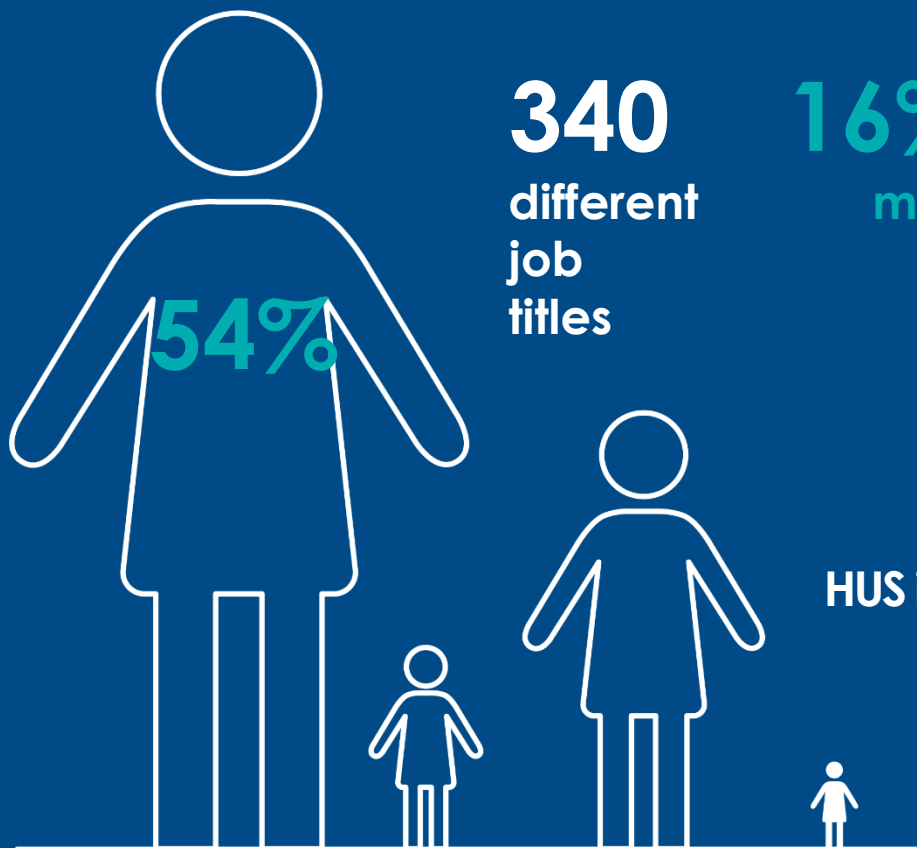
**16%**  
men



**84%**  
women

Number of  
employees:  
**+6.4%**

1,600 new employees



Nursing  
staff  
14,300

Doctors  
3,400

Other  
personnel  
7,400

Other  
specialist  
staff  
1,400

**THERE'S  
27,000 OF US**

HUS is the second largest employer  
in Finland



Training  
days/  
person



**525**  
employees  
retired


at the average age of 64.5



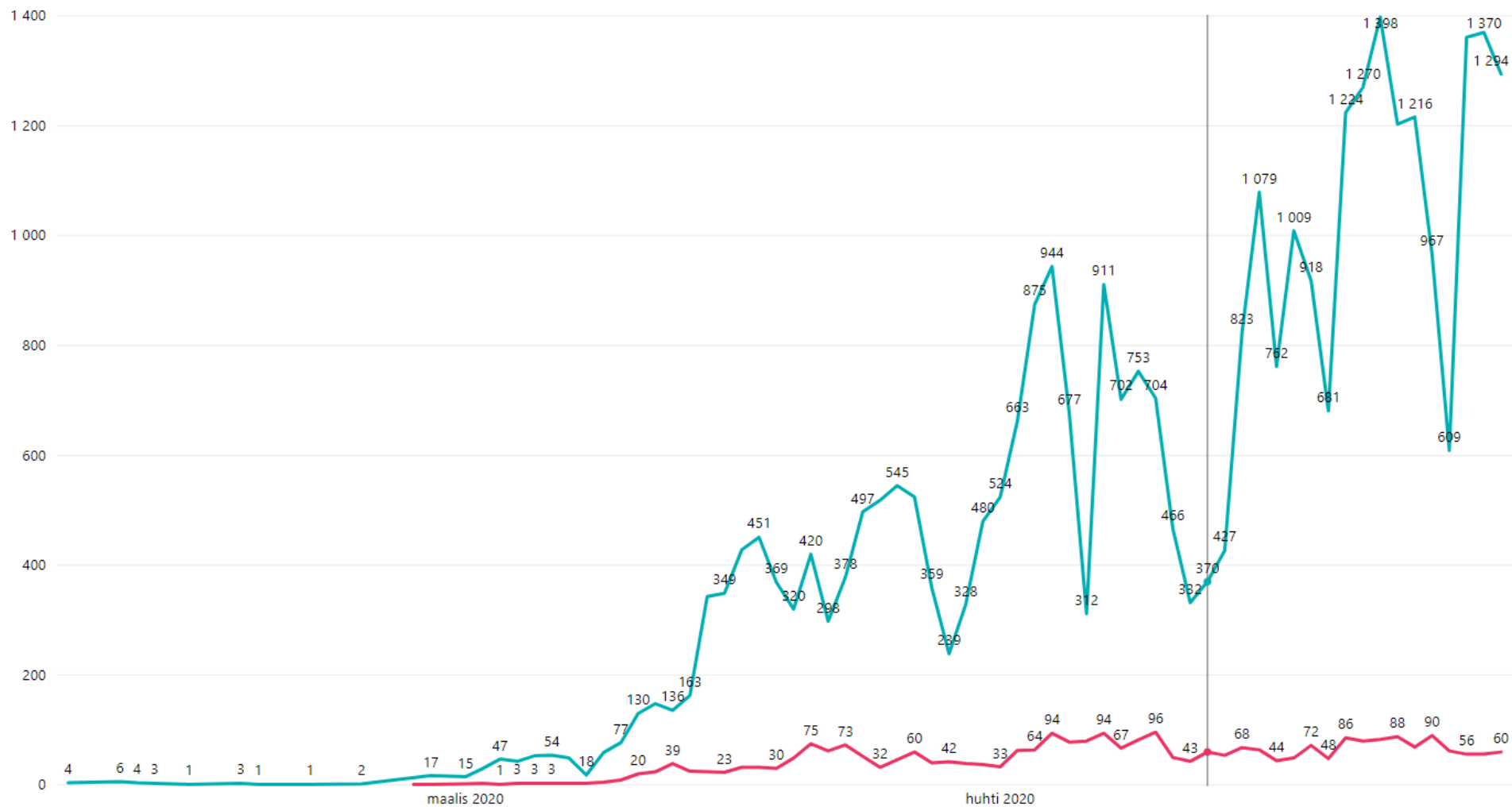
**70%**  
of employees would  
recommend HUS  
as a place of work

# HUS: COVID-19 PANDEMIC TIMELINES

Jan 23	First preparations for COVID
Jan 28	First COVID patient in Finland
Feb 2	First COVID Executive Group Meeting in HUS
Feb 26	First positive COVID patient in HUS
March 13	First COVID patient in ICU in HUS
March 16	Emergency Powers Act in Finland
March 19	HUS in 3rd state of preparedness (CMO leads)
March 27	Uusimaa lock down (ends April 15)
May 14	Schools will open

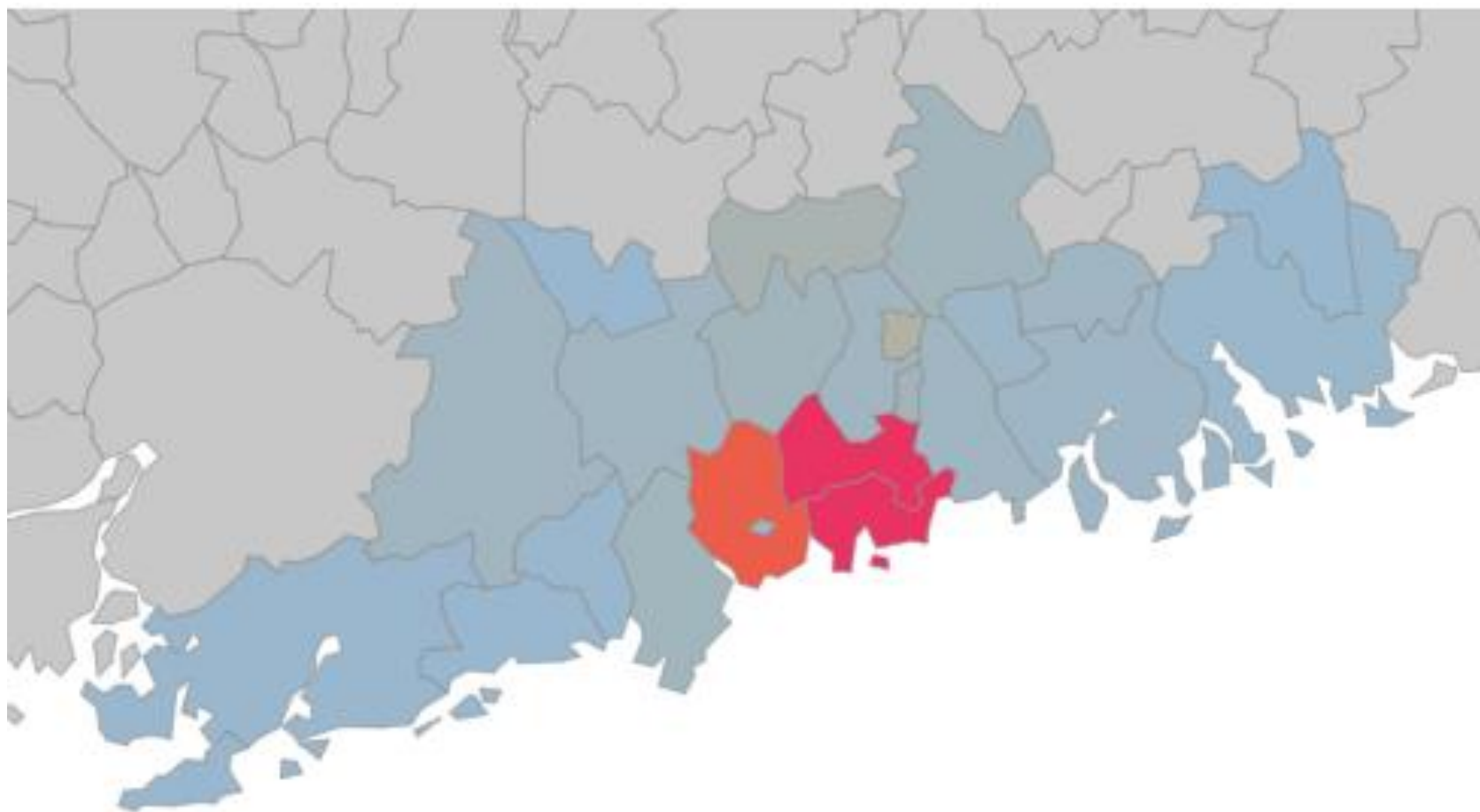


# HUS: COVID-19 SAMPLES AND POSITIVE TESTS





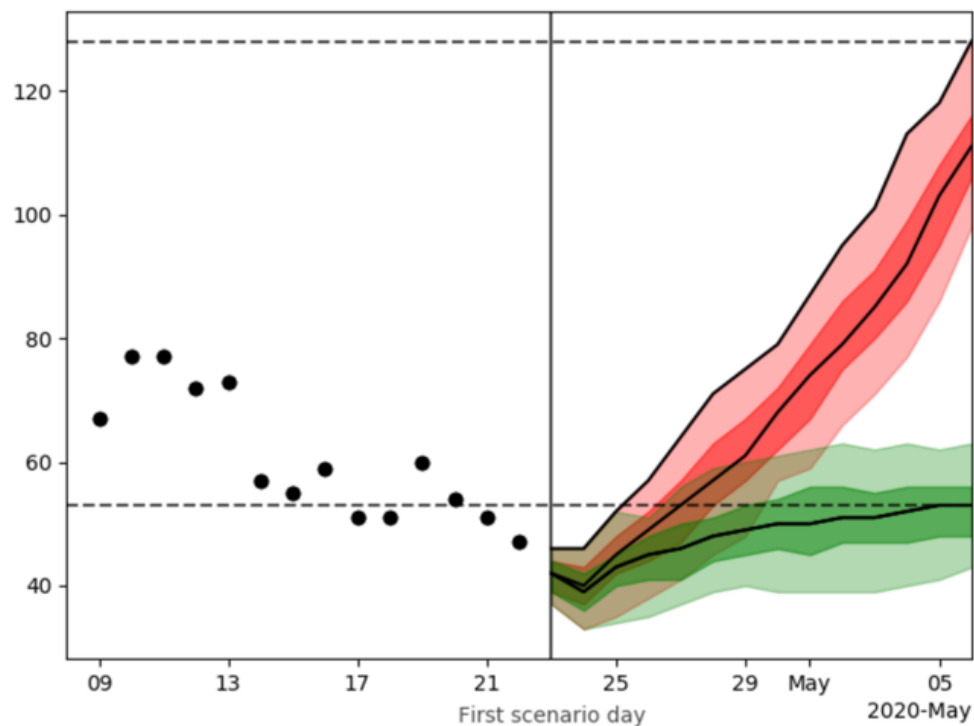
## HUS: COVID-19 PATIENTS IN HELSINKI AREA



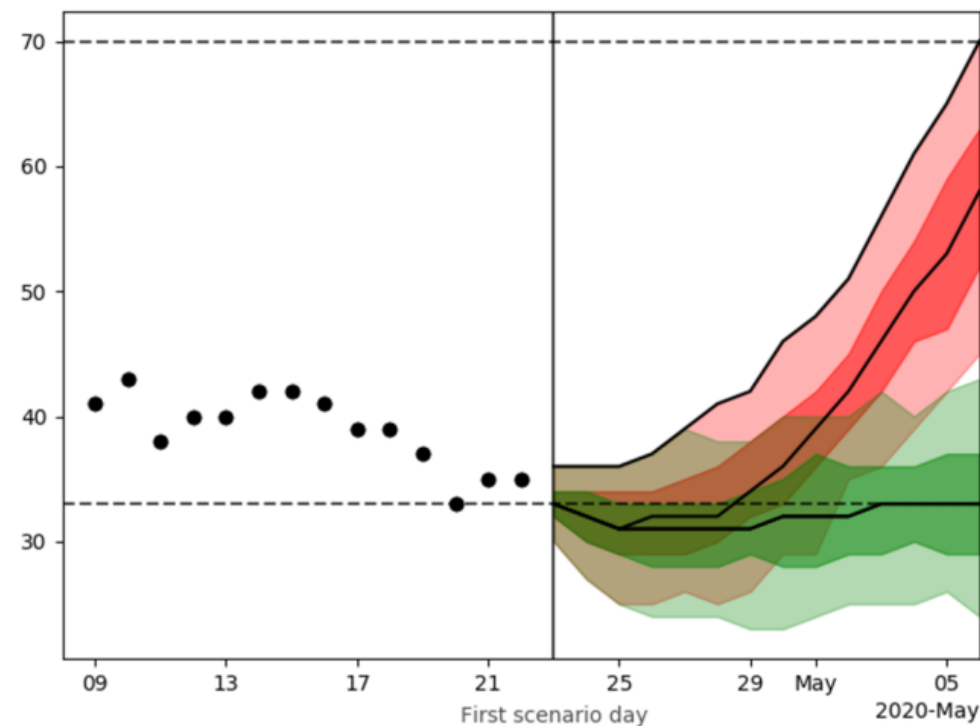
# COVID-19 PROGNOOSI BY HUS

Red line is P95 scenario, green line is P50 scenario

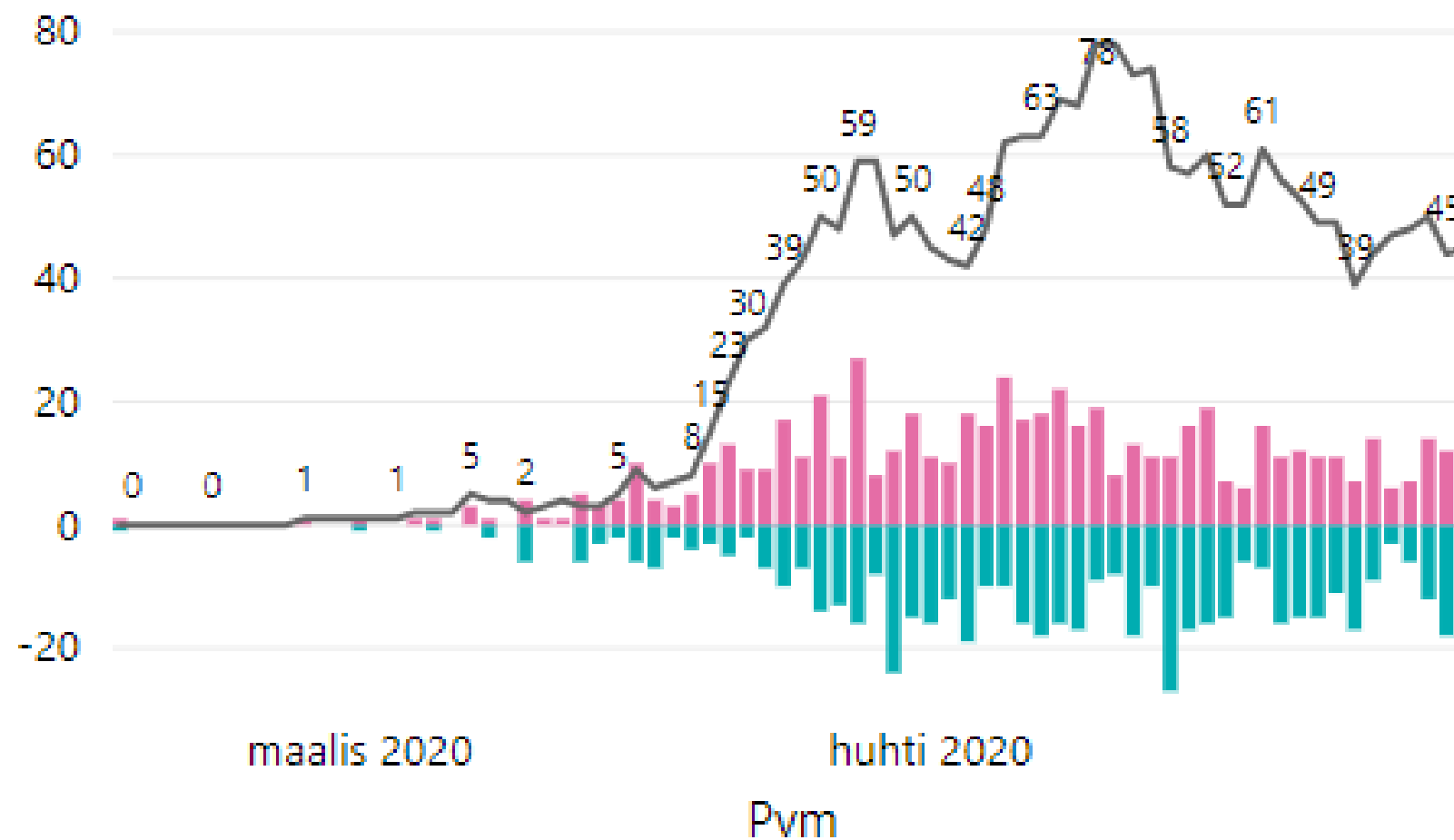
**Ennuste vuodeosastohoidon tarpeelle**



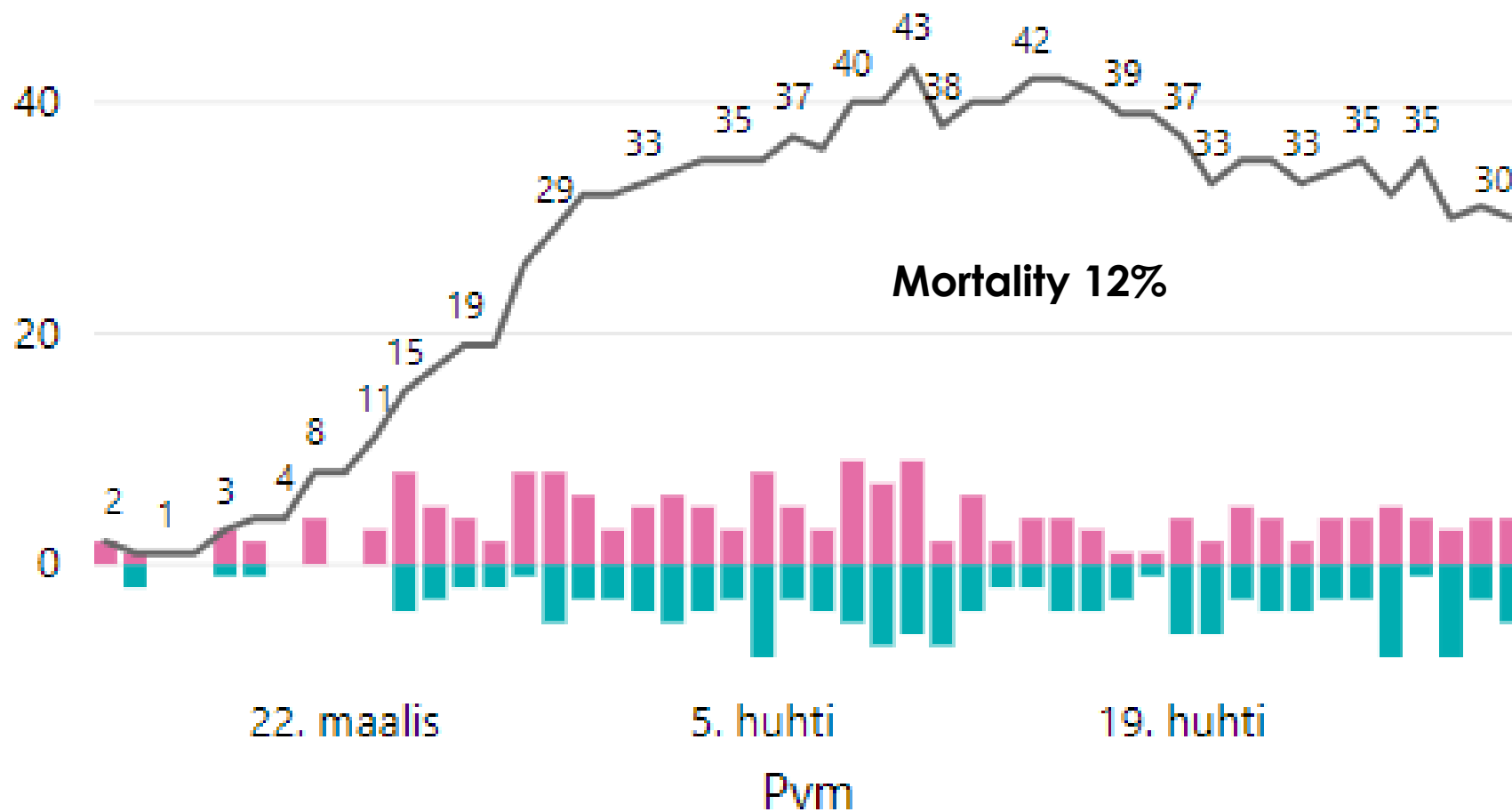
**Ennuste tehohoidon tarpeelle**



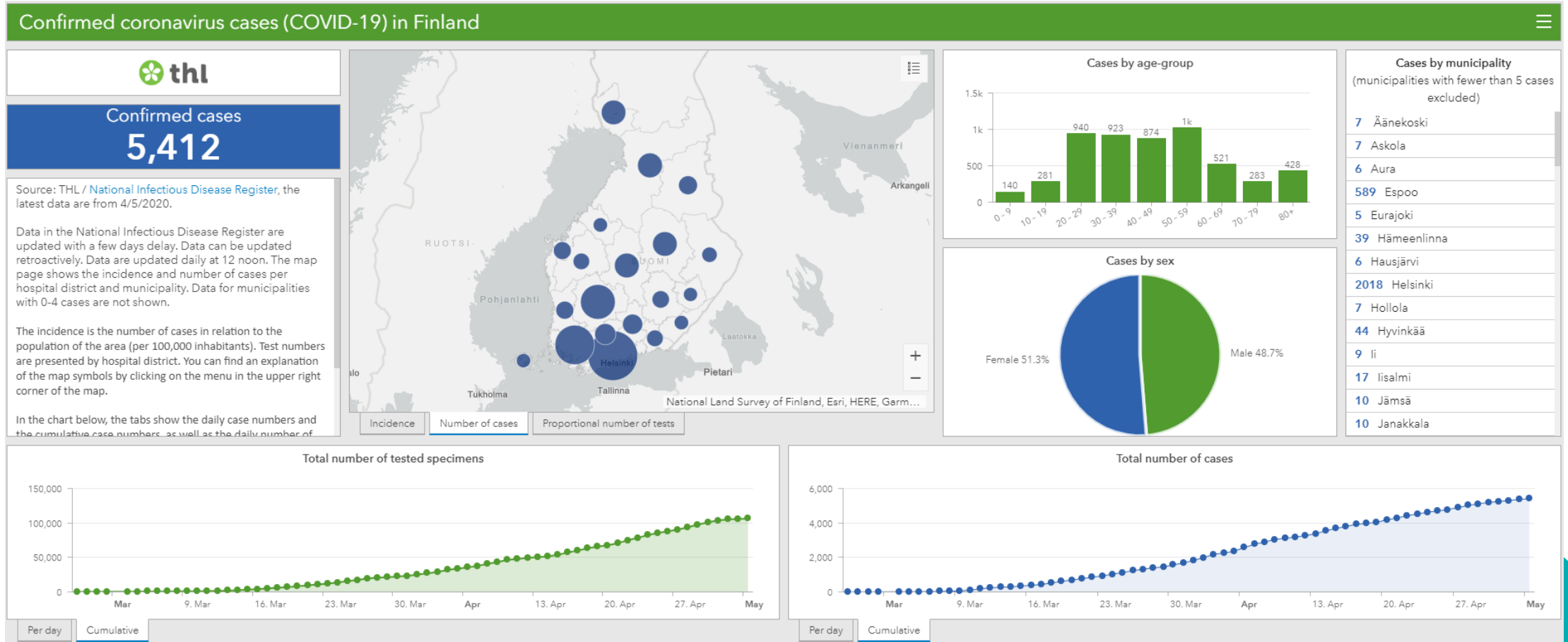
# HUS: COVID-19 PATIENTS IN WARDS



# HUS: COVID PATIENTS IN ICU

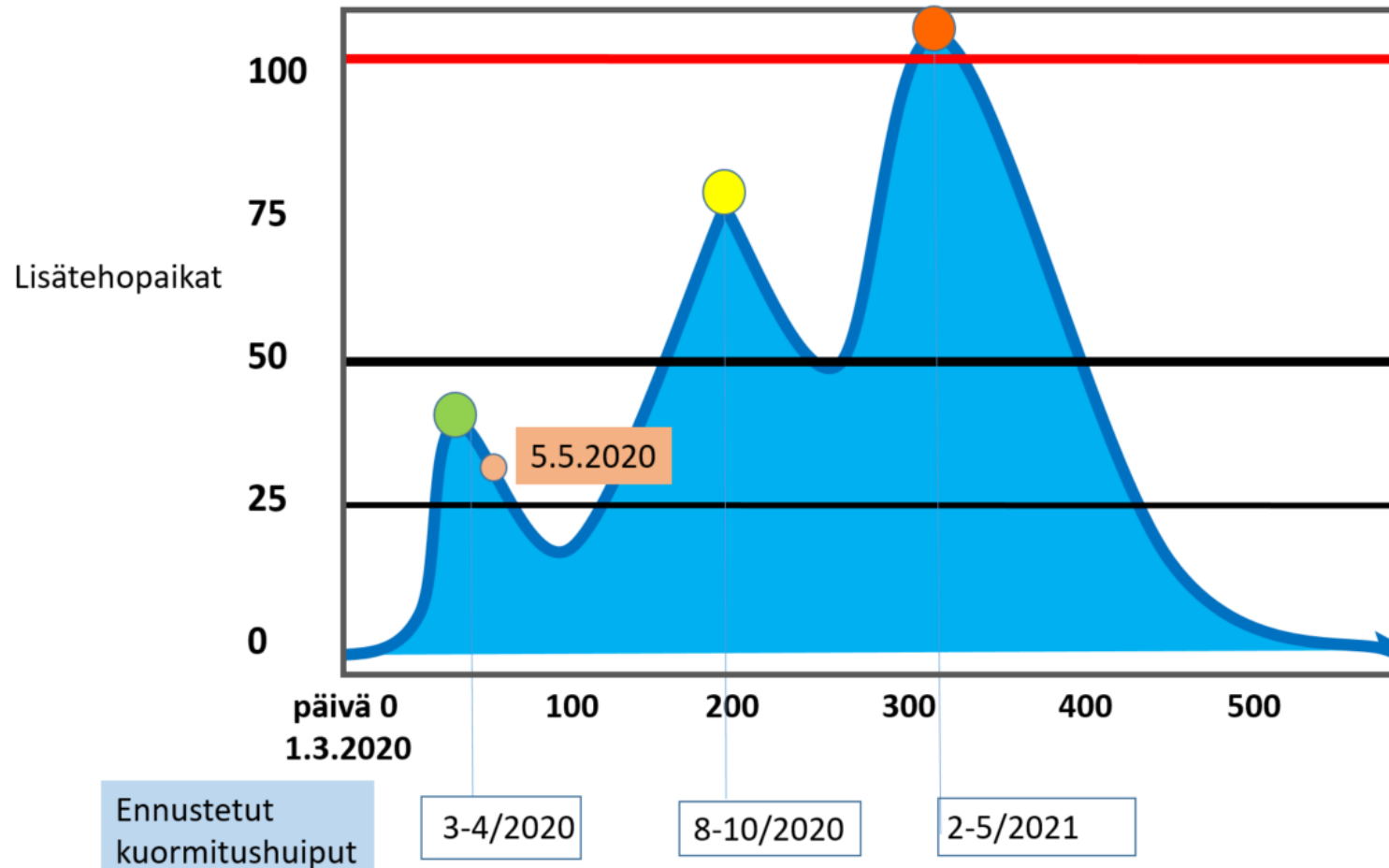


# COVID-19 TESTS AND CASES IN FINLAND



# COVID-19 AND PROGNOSIS FOR ICU IN HUS

HUS- tehohoidon COVID-lisäresurssitarve /THL ennusteen mukaan 5.5.



# HUS: ORGANISATIONAL CHANGES IN COVID-19

- centralized leadership (reorganization of 23 hospitals)
- 9 am status report meeting (online, all 50 functional units)
- immediate decision execution (minimal bureaucracy)
- internal and external communication (web site, bulletin, videos, streaming)
- 100 doctors and 1000 nurses to COVID (surgical personnel)
- consequences: -75% elective surgery, -20% acute surgery, -40% ED visits, -80% elective ambulatory visits
- increase of remote telemedicine
- phone calls, video visits, chat, Health Village, corona bot
- challenges: increased waiting times, worsening of symptoms...
- economical consequences: 200 M€/2020 and 50 M€ in 2021?

